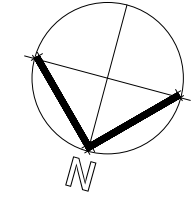
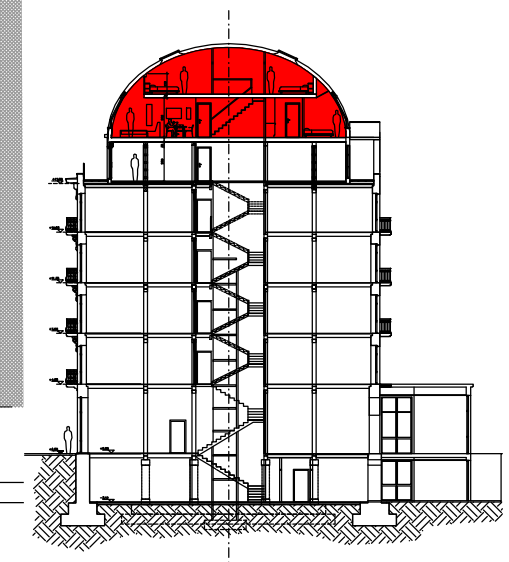


Moraza 4

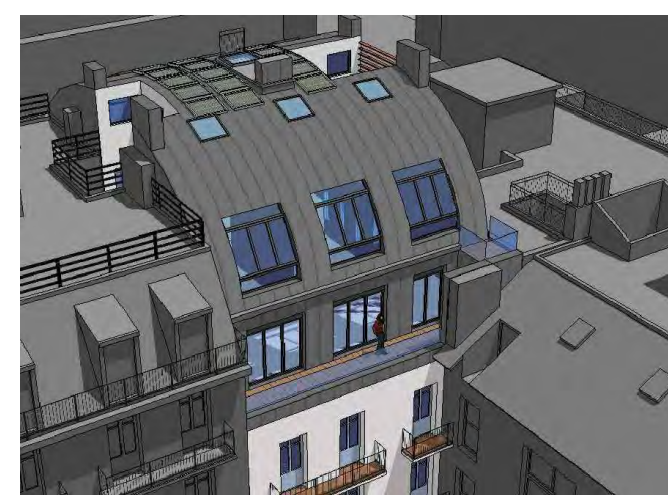
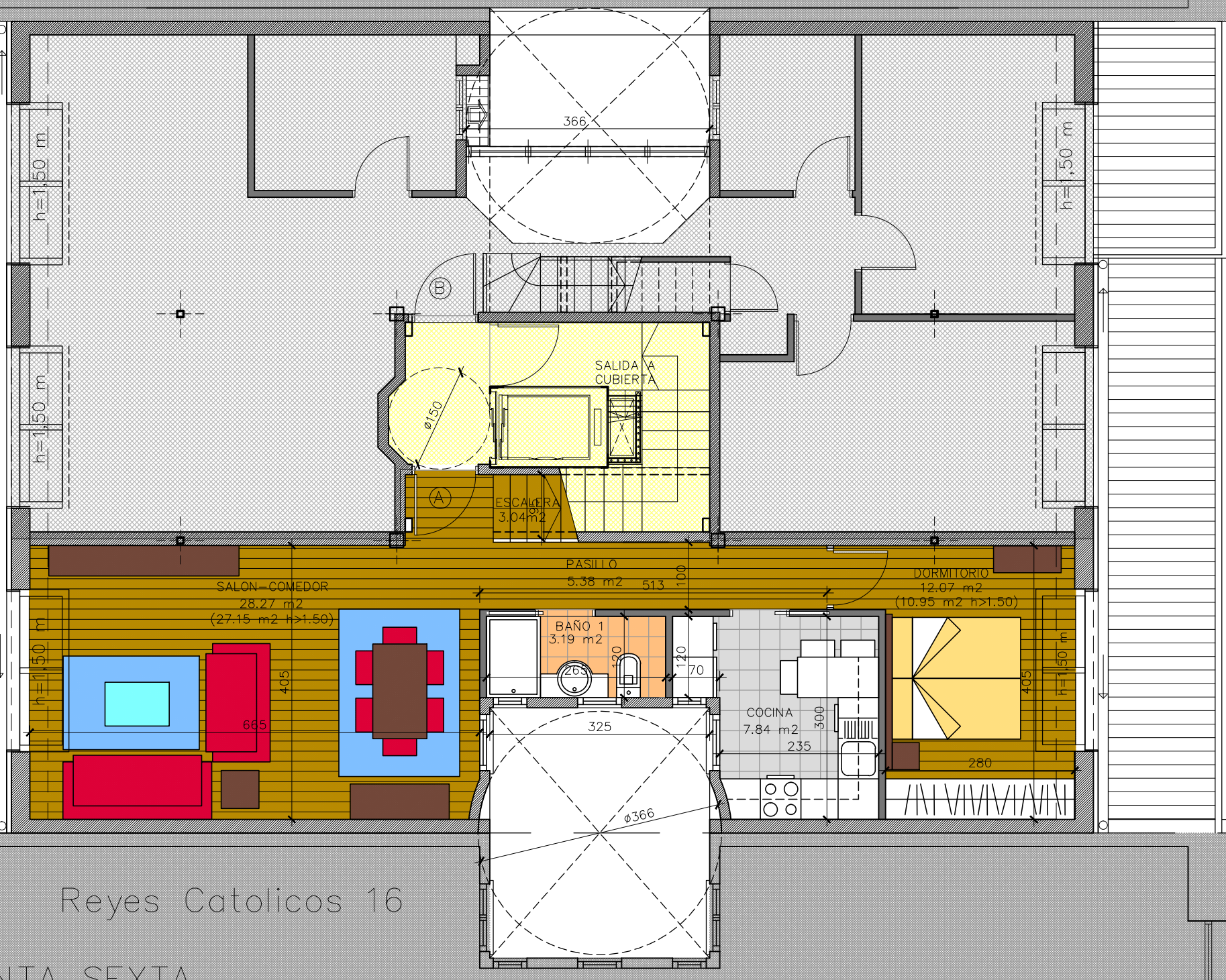


VIVENDA Izd

SALON-COMEDOR	28.27 m2 (27.15 m2 h>1.50m)
COCINA	7.84 m2
DORMITORIO 1	12.07 m2 (10.95 m2 h>1.50m)
DORMITORIO 2	18.11 m2 (16.31 m2 h>1.50m)
DORMITORIO 3	12.78 m2 (10.89 m2 h>1.50m)
BAÑO 1	3.19 m2
BAÑO 2	2.94 m2
ASEO	0.96 m2
PASILLO INF.	5.38 m2
PASILLO SUP.	3.46 m2
ESCALERA	3.04 m2
TOTAL SUP. UTIL	98.04 m2
TOTAL SUP. UTIL (h>1.50m)	92.11 m2
TOTAL SUP. CONST.	65.55 m2 planta inf. 47.01 m2 planta sup. 112.56 m2

Reyes Catolicos 16

PLANTA SEXTA



- Piso 6º Izda tipo Duplex compuesto por:
- Planta inferior:
 - Salon-Comedor
 - Cocina-Comedor
 - 1 Dormitorio
 - 1 Baño
 - Planta Superior:
 - 2 Dormitorios
 - 1 baño + aseo

Reyes Católicos

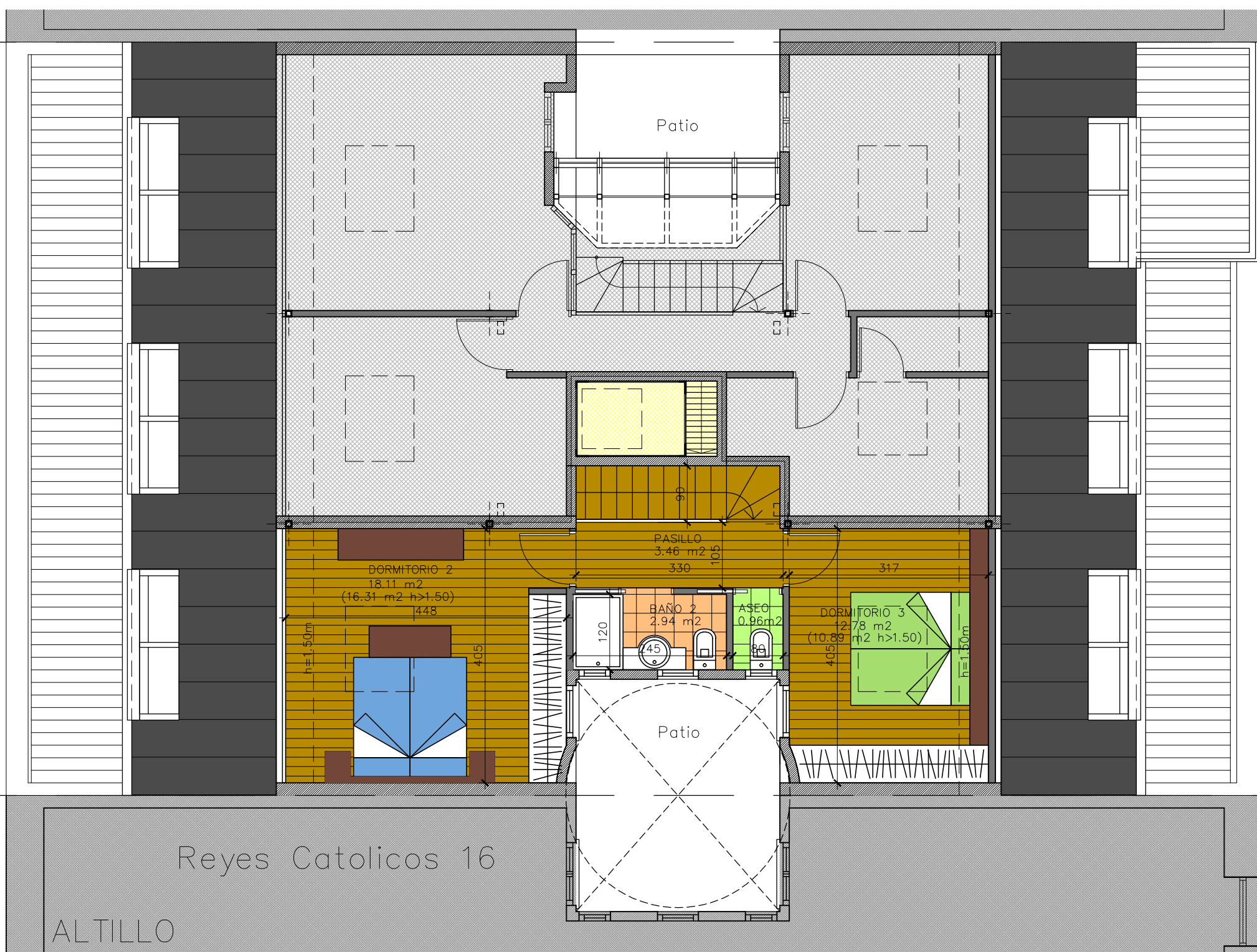
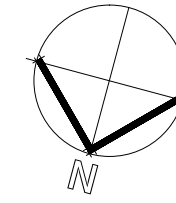
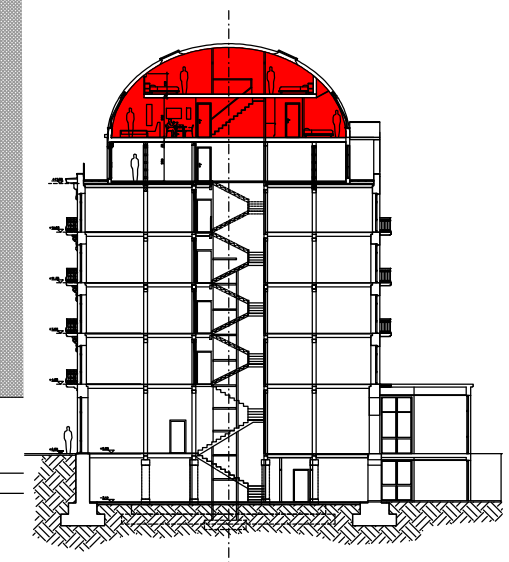
18

Donostia-San Sebastian

Promotor: ERREGÉ 18 BERRI S.L.

Arquitecto: INESTARK S.L.P.

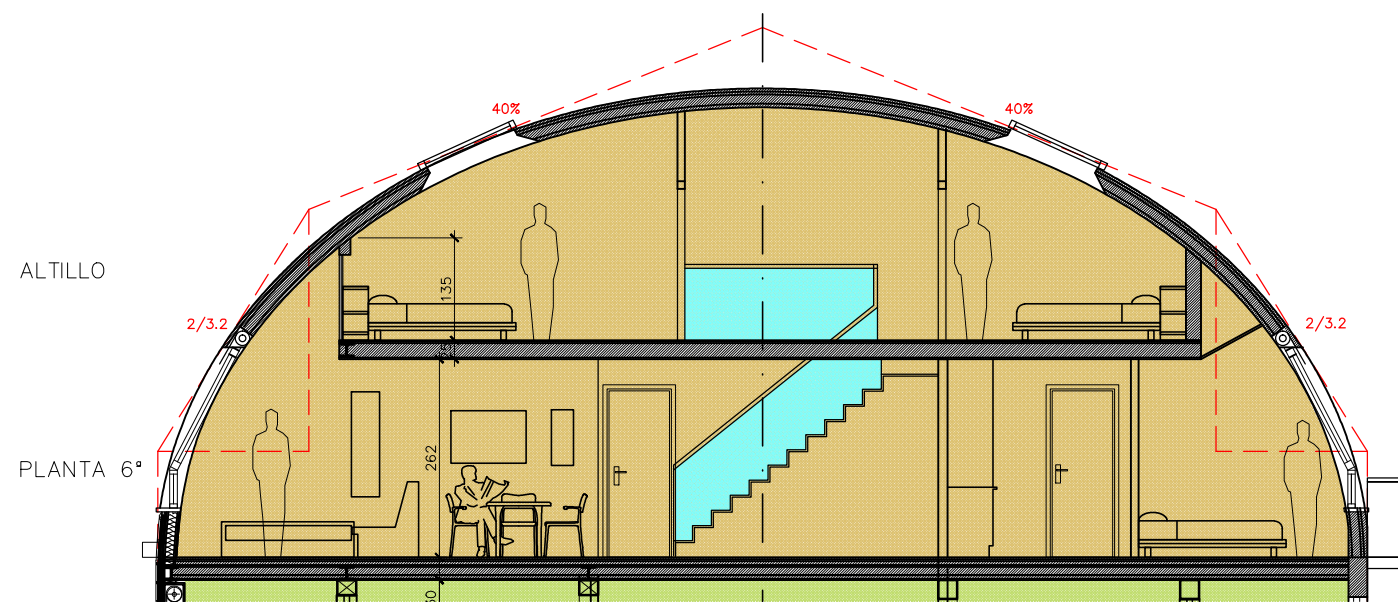
Moraza 4



Reyes Catolicos 16

ALTILLO

- Piso 6° Izda tipo Duplex compuesto por:
- Planta inferior:
 - Salon-Comedor
 - Cocina-Comedor
 - 1 Dormitorio
 - 1 Baño
 - Planta Superior:
 - 2 Dormitorios
 - 1 baño + aseo



Reyes Católicos

18

Donostia-San Sebastian

Promotor: ERREGÉ 18 BERRI S.L.

Arquitecto: INESTARK S.L.P.